



BizNet Software – BizBroadcast

Version: 2.4.3 Hotfix

Date: 9/28/2017

Table of Contents

- I. **Bugs** 2
- II. **Known Issues**..... 3

Bugs

1. CASE0000037197 - Resolves Broadcast crashing during XLSXVALUES and long merging of workbooks.
2. CASE0000037671 - Resolves Broadcast crashing during XLSX and preserved formulas enabled.
3. CASE0000038196 - Updated size of Location Button in Email forum - Outlook Address List

Known Issues

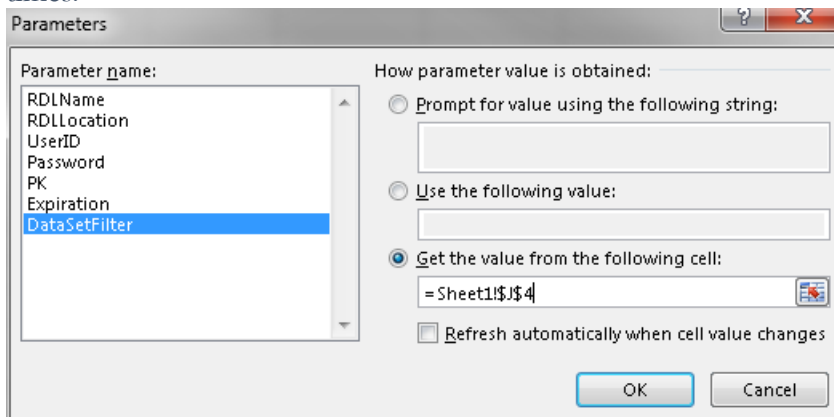
1. When errors are prompted during Broadcast processing, reference the About box for further details on the issue.
2. Reference error can occur in any workbooks. If cell referencing is used in the Distribution Template and the reference is broken or missing, Broadcast processing may return a #REF! error in the Excel ID: -2146826265 in the file or filename.
3. When users save a Broadcast distribution template in xlsx (xlt format is unsupported) and add a new node in BizInsight to drag and drop the workbook as a template, Broadcast cannot process the drag and drop distribution template inside the workbook template. The drag and drop method in BizInsight creates a temporary workbook file which cannot be processed for multiple iterations by Broadcast.

Workaround:

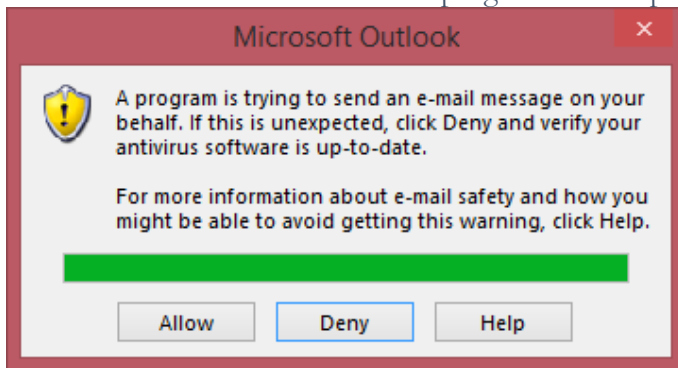
A. If the drag and drop method is used, save the Distribution template in only xlsx format for Broadcast to process. The newly created workbook will need to be saved on the local machine for Broadcast to distribute multiple times.

B. In Excel, open the workbook template separately and click the Run Now button to process the Broadcast distribution template.

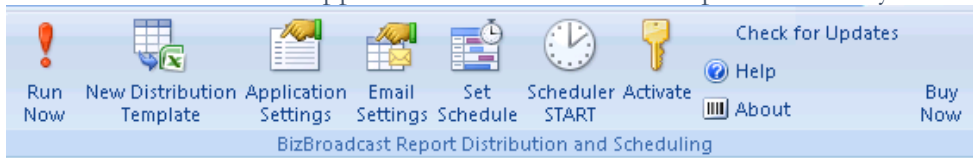
4. When users save a Broadcast Distribution template with a workbook containing dynamic analysis sets (see screenshot below) and the user attempts to distribute using Broadcast, Broadcast will prompt to the user save the workbook and fail to distribute after the first time. Excel workbooks that are dragged and down from BizInsight are created as a temporary file on the local machine. Broadcast is unable to recognize a temporary file. The workaround for the drag and drop feature in BizInsight is to save Broadcast Distribution templates in only xlsx format and save the newly created workbook on the local machine for Broadcast to distribute multiple times.



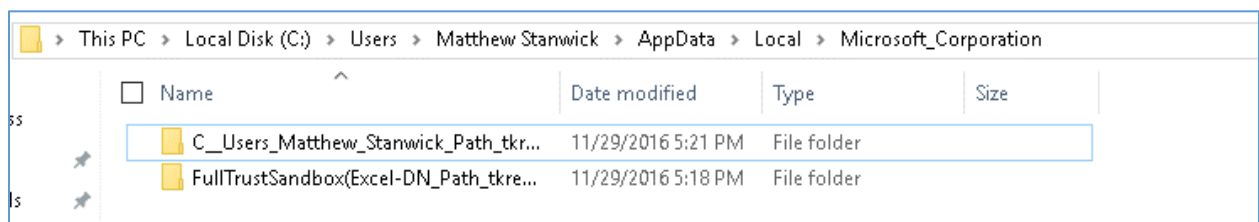
5. Macros are recorded in a VBA module object or as VBA procedures referencing a worksheet object. If a macro references a worksheet object instead of the module, Excel's worksheet event will trigger and Excel will automatically execute the macro. This becomes performance issue during Broadcast macro distribution. Broadcast will first instruct the macro to run during the refresh phase, then macro will be triggered to run again due to the worksheet change event in Excel. In total, the macro will be ran twice during a Broadcast distribution.
6. Microsoft Outlook automatically checks for anti-virus programs installed in the operating system. If anti-virus is not detected and when Broadcast distributes to emails addresses using Outlook, Outlook security will force a security prompt for each distribution row. The available resolution is to install an anti-virus program in the operating system.



7. Excel 2007 contains unsupported icons for Check for Updates and Buy Now ribbon buttons.



8. BizInsight 7 dynamic tables and Broadcast multiple tabbed parameters is not supported in version 2.3. The available workaround is to create multiple distribution rows for each tabbed parameter. BizInsight 7 Refresh Workbook can only handle one sheet rename at a time.
9. BizInsight 7.3 inspects certain directories for settings when BizInsight 7.3 functionality is called. When legacy user.config files remain in those directories, BizInsight 7.3 fails to connect to the Service (BizAccelerator). The remnant files can be caused by previous installation of BizBroadcast version 2.3.1 or below and BizInsight v5. The workaround is to manually remove the remnant user config files in the AppData directory.



10. Broadcast version 2.3 and 2.3.1 Check for Updates button does not detect updates. Broadcast must be uninstalled manually. Broadcast version 2.4.0 or later can check for updates.
11. Broadcast Scheduler with PackNGo RenderFormat is not fully supported during distribution. Broadcast creates a temporary workbook and needs at least one Excel workbook to be opened when scheduling. BizInsight7 can only have the PackNGo workbook to be opened. The conflict results in BizInsight prompting to close other workbooks and interrupts the scheduling automation. The workaround is to click the OK button and PackNGo process will complete.
12. Broadcast with PackNGo RenderFormat does not support Excel caches. If a workbook with Excel caches is processed in PackNGo, the local Excel caches in the original workbook will not be transferred to the new PackNGo workbook.